

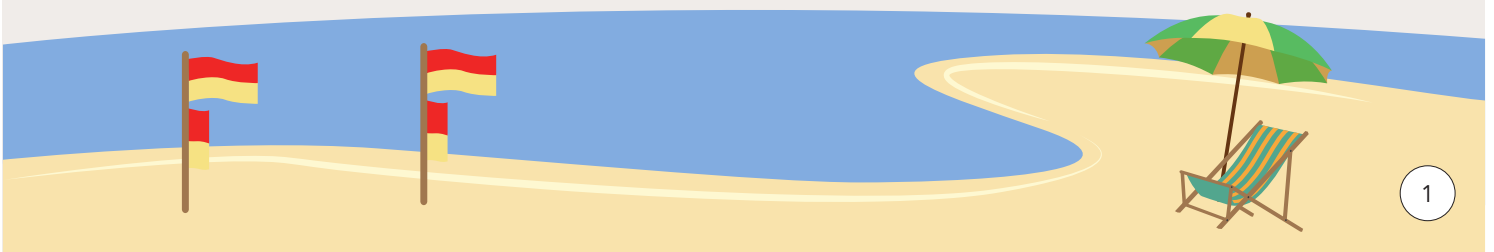


Geography

Australia on the map!

Time recommended: 1 hour
Year 3 and 4

Strand:	Geographical Knowledge and Understanding
The representation of Australia as states and territories, and Australia's major natural and human features (ACHGK014)	
Strand:	Geographical Inquiry and Skills
Descriptor:	Collecting, Recording, Evaluating and Representing
Collect and record relevant geographical data and information, for example, by observing, by interviewing, conducting surveys and measuring, or from sources such as maps, photographs, satellite images, the media and the internet (ACHGS027)	



Name: _____



Australia on the map!

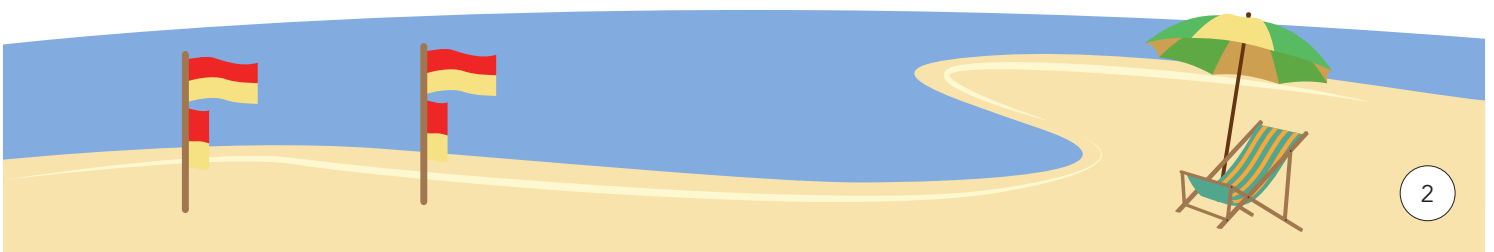
Using your knowledge and research tools, describe Australia and its geographical aspects.

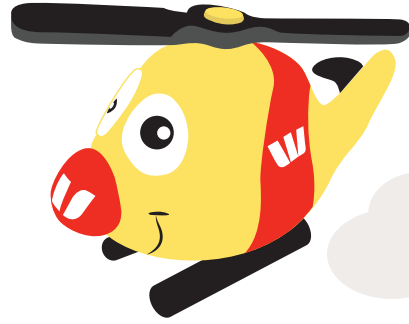
TASK ONE:

Using tools in the classroom such as wall maps or Google Earth, locate and name the following locations on the map below.

Map 1:

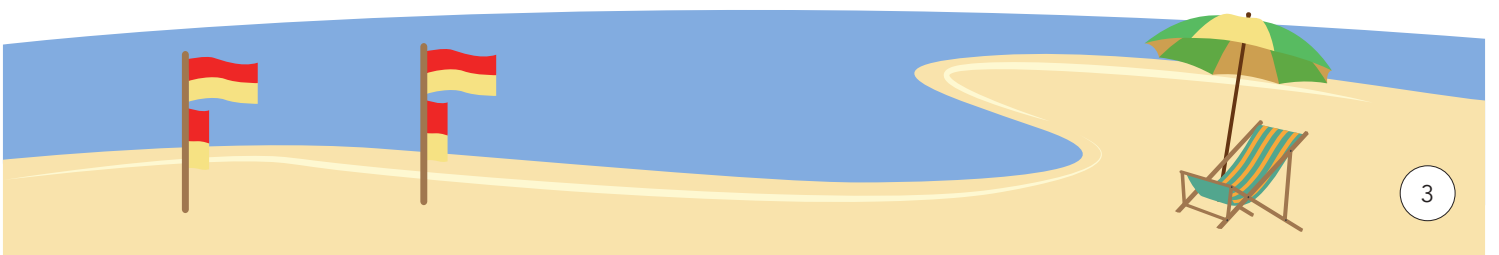
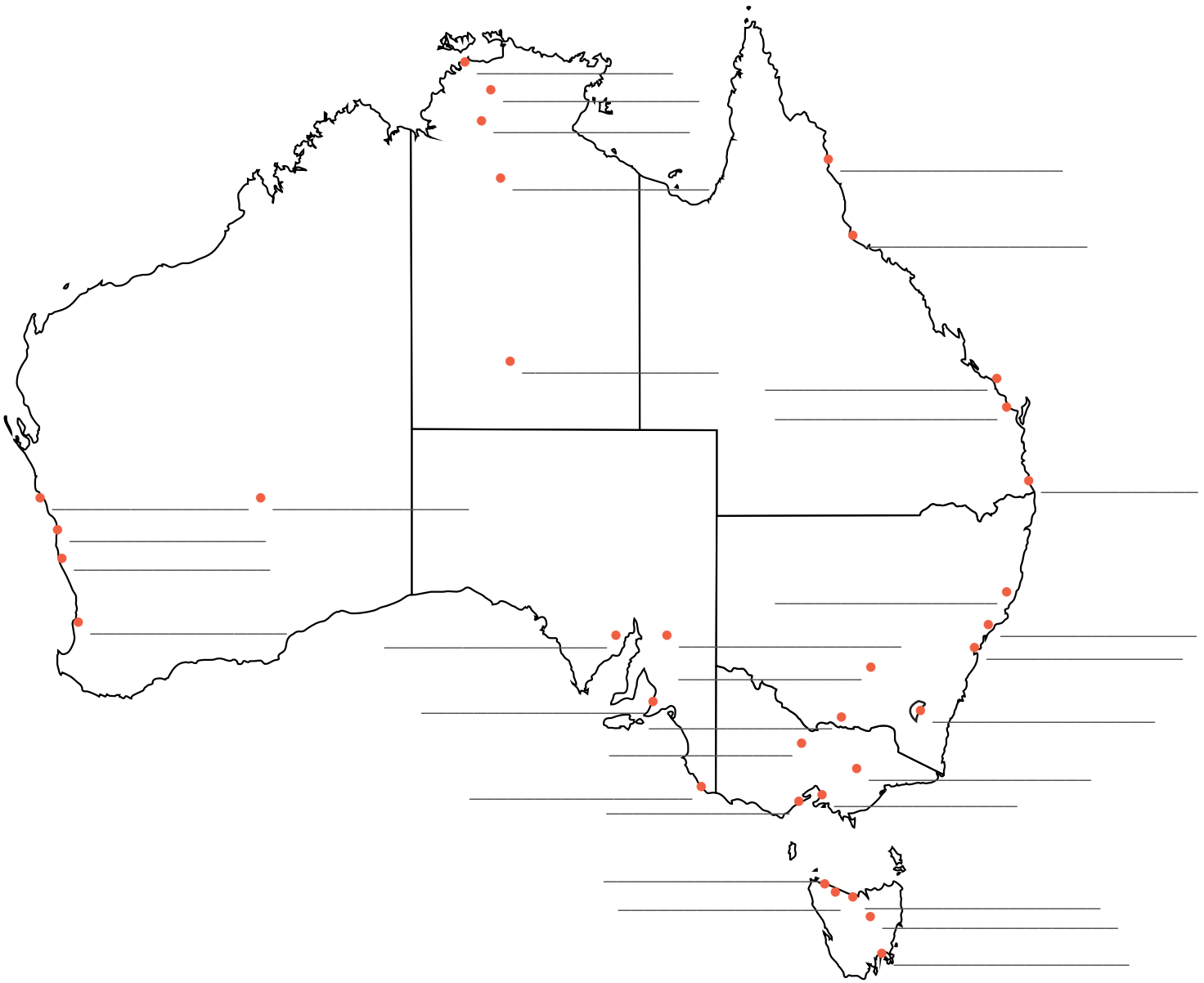
- Each State of Australia
- Each Territory of Australia

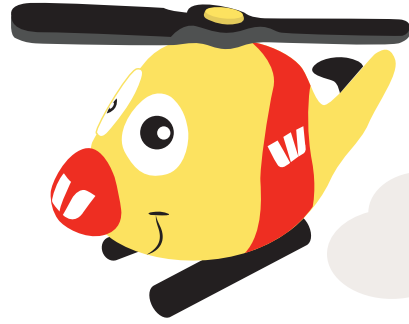




Map 2:

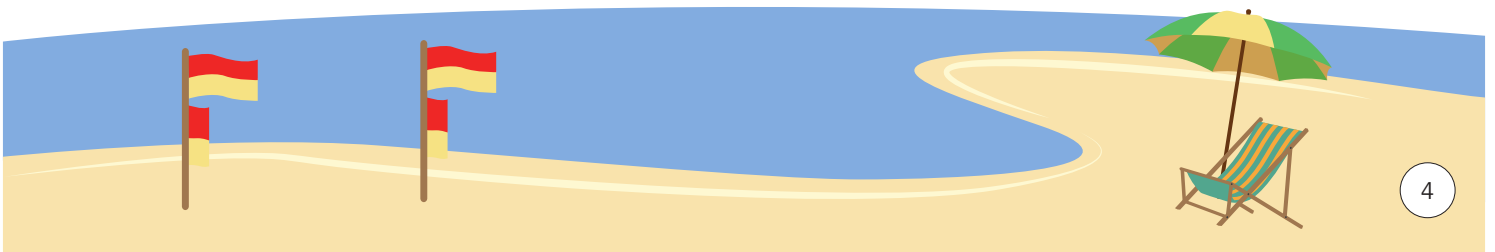
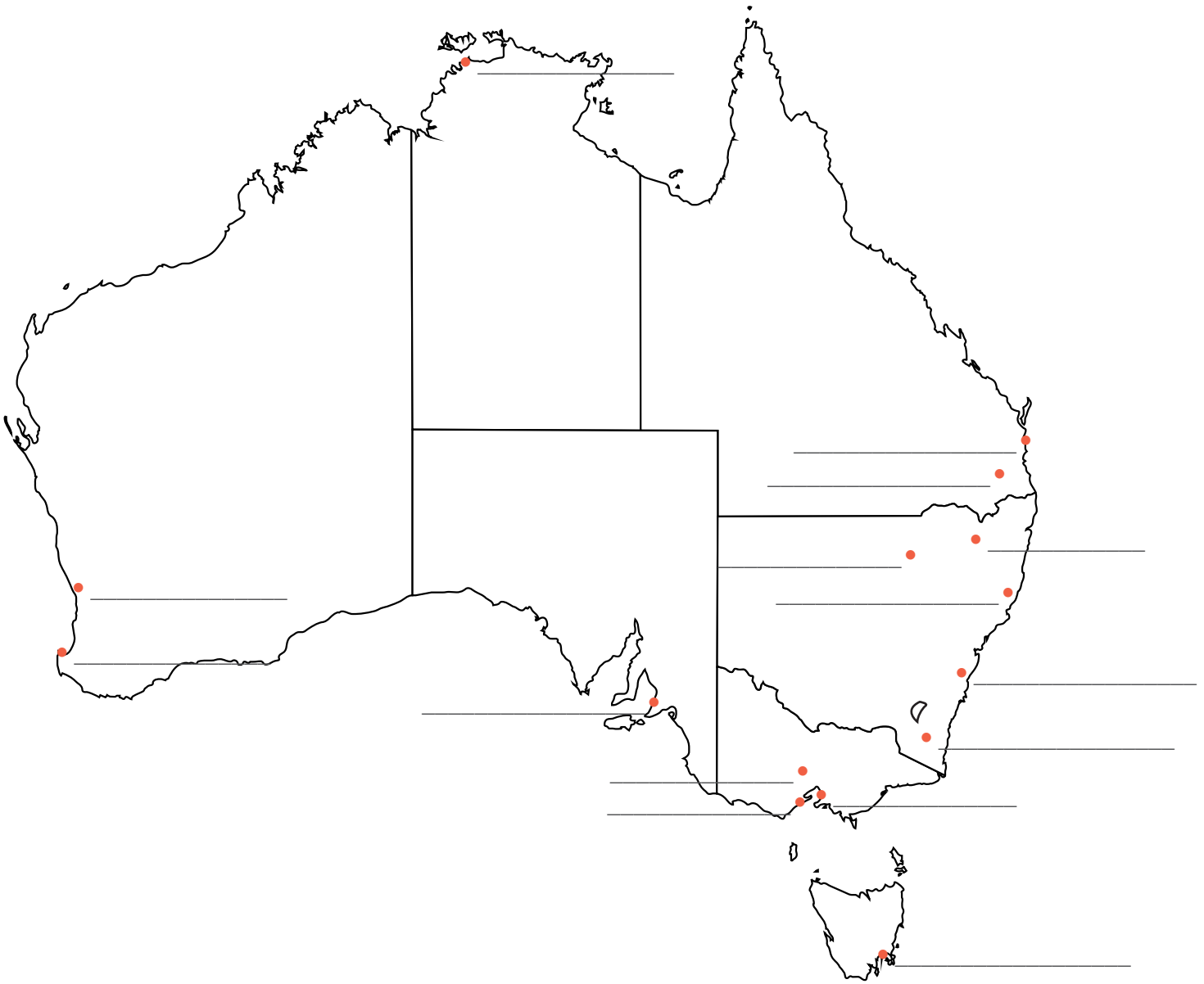
- Australia's capital cities
- Your state's regional centres

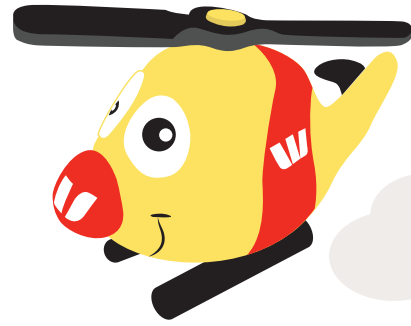




Map 3:

- All 13 Westpac Rescue Helicopter Bases and 2 Westpac Rescue Boat Bases



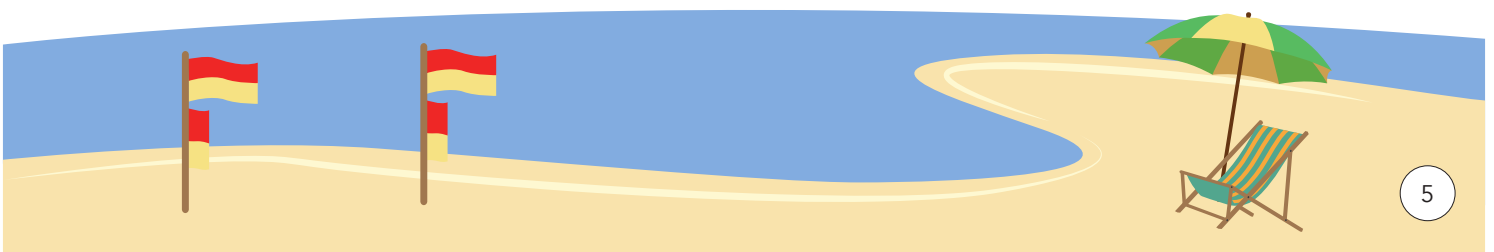
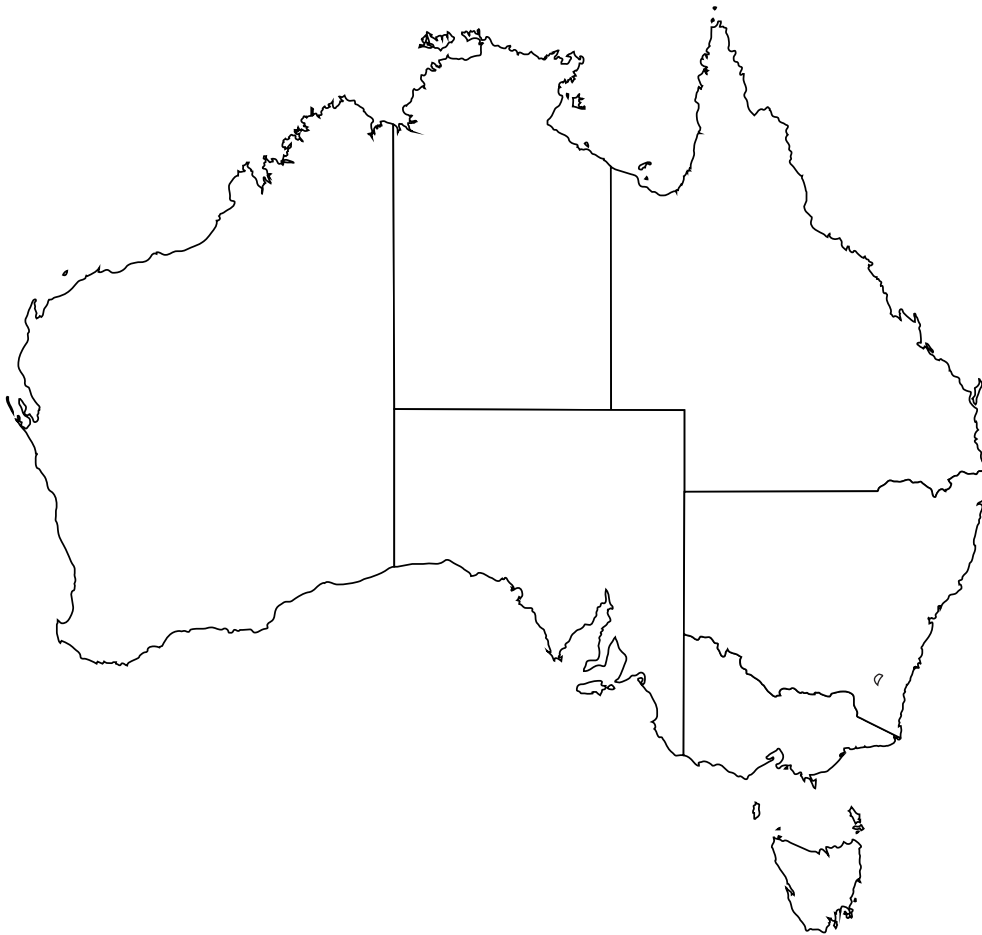


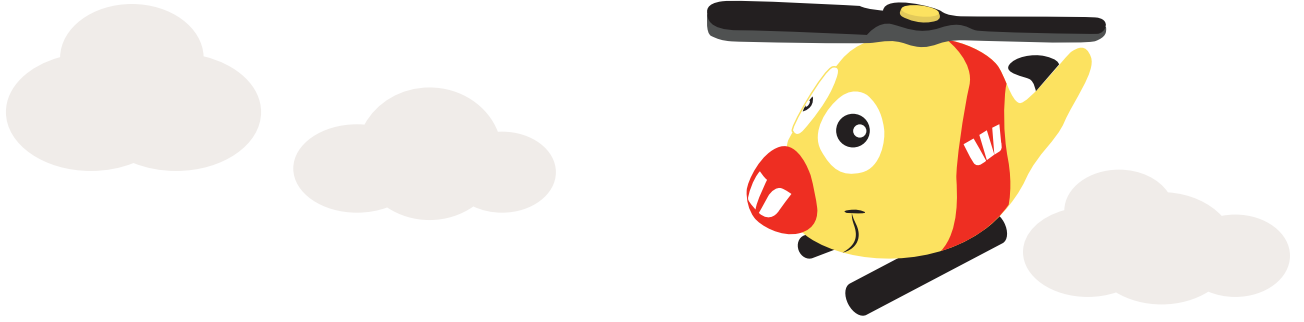
TASK TWO:

The Westpac Lifesaver Rescue Helicopter Service flies all over Australia on missions.

There are many different types of missions which take the crew to different types of places; such as the beach to do a shark patrol, or to the bush to rescue people that might have injured themselves after falling off a horse or dirt bike.

1. Mark on the map below three of the major natural features of Australia that the Westpac helicopter might fly over, for example rivers, deserts, rainforests, the Great Dividing Range and the Great Barrier Reef.
2. Also mark on the map three well-known, manmade features built near a Westpac Lifesaver Rescue Helicopter Base, for example Sydney Opera House near the La Perouse Base, or the Giant Gold Guitar in Tamworth.





3. Describe the major natural and manmade features you have chosen.

Natural Feature 1: _____

Natural Feature 2: _____

Natural Feature 3: _____

Manmade feature 1: _____

Manmade feature 2: _____

Manmade feature 3: _____

4. Using the internet, research one fun fact about each of the manmade features you have marked on the map.

Fun fact 1: _____

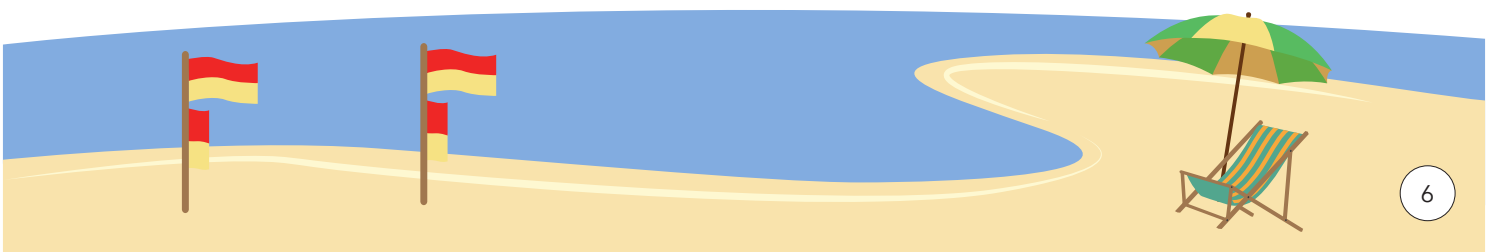
Fun fact 2: _____

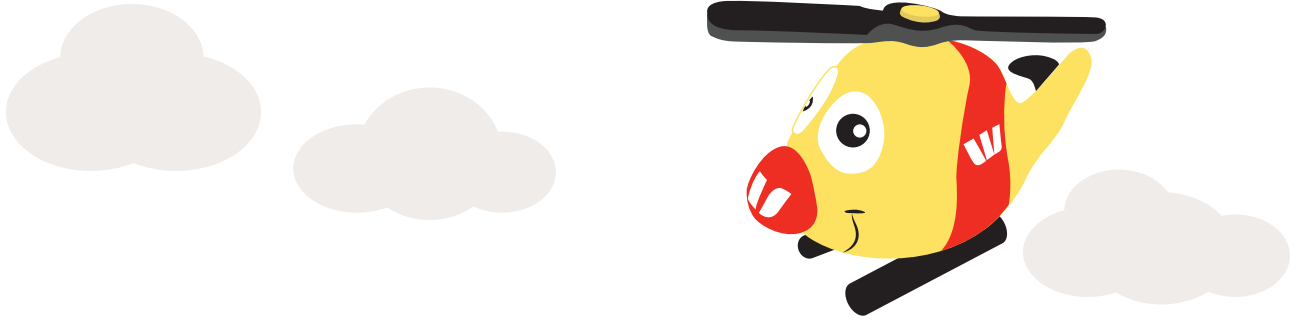
Fun fact 3: _____

TASK THREE:

Looking at the national Westpac Lifesaver Rescue Helicopter Service Base map and locate where your local base is

1. Now, using the tools in the classroom such as a wall map or Google Earth collect and record data and information about the area around your local Base; for example, the types and quantity of vegetation in the area, and nearby settlements.





2. Describe in detail the area's geography, such as which plants grow naturally, list the native animals, how many people live in nearby settlements and what industry the settlement is known for (for example mining, farming etc.).

3. Draw a picture to show your local Base and the things that surround it.

A large empty rectangular box for drawing.